

Technical Guide

Welcome to the 2011 Great Brewers Gran Prix of Gloucester! On behalf of the host club Essex County Velo, the Gran Prix of Gloucester, and all of our sponsors, I would like to welcome to you our event!

Paul Boudreau
Race Promoter
Gran Prix of Gloucester
www.gpgloucester.com

1. Events – Saturday and Sunday, 1 (UCI C1) & 2 (UCI C2) October 2011 Stage Fort Park, Gloucester, MA USA

The 2011 Great Brewers Gran Prix of Gloucester events will be run according to UCI regulations. The UCI scale of penalties applies. An international racing license is required to enter these events. The Elite Men & Women races are part of the Shimano New England Professional Cyclocross Series.

All other events are run under USAC Permit (pending). USA Cycling regulations and penalties apply. Sunday 2 October, Essex County Velo will hold a 1:50pm Kids Race that falls outside the scope of USAC & UCI.

On-site registration begins at 6:30am at the Stage Fort Park Visitors Center. For USAC events, registration closes 30 minutes prior to your event. For the UCI events, Registration closes one hour before the events. Riders who register on race day are subject to a late fee of \$10.

Time	Category	Length	Fee (\$)	Field Max	Places	Prizes
8:00a	4 Men	40 min	30	125	3	merch
9:00a	Cat 4 Masters 35+	40 min	30	125	3	merch
10:00a	3/4 Women Masters Women 3/4 35+ Juniors 10-14	40 min	30	125	3/3	merch/ merch
11:00a	Masters 45/55+	45 min	1 1/6	125	5/3	\$250/ merch
12:00p	1-2-3 Masters 35+	45 min	35	125	8	\$500
1:00p	Cat 3 Men Juniors 15-18	45 min	1 2/5	125	8 / 5 deep	\$500/\$200
2:00p	Course inspection/Kids Race (Sun)		free			
2:30p	UCI Elite Women	40 min	40	125	15	\$1,353
3:30p	UCI Elite Men/U23 Men	60 min	45	125	25	\$8723/ \$2068

* Riders being lapped by the first rider from the first race on the course will be pulled from the race at the Finish line and will be placed according to the order they have been pulled. See Section 9. Lapped Riders.

2. Race Age and Eligibility

USAC 1A14. A rider's racing age for cyclocross is determined by the year in which the current season ends with the World Championships (2011). Take this year and subtract the year you were born. This is your racing age. For example, if you were born in December of 1990, your racing age is 21 (2012-1990).

The Elite Men/U23 Men event is open only to riders of racing age 19+. Elite Women and UCI Junior Women race together, but you must be at least 17 years (racing age) to race in this category.

3. Prize Lists and UCI Points

For non-UCI categories, a detailed list of payouts and non-cash prizes will be posted on signs at the registration area. List is net after 2% UCI taxes have been removed.

	C1 Elite Men		C2 Elite Men		Elite Women	
Place	\$US	UCI Points	\$US	UCI Points	\$US	UCI Points
1	2178	80	457	40	247	40
2	1090	60	234	30	173	30
3	784	40	154	20	133	20
4	610	30	123	15	107	15
5	523	25	112	10	93	8
6	436	20	107	8	80	10
7	392	17	99	6	80	6
8	349	15	91	4	80	4
9	306	12	88	2	80	2
10	261	10	84	1	80	1
11	218	8	78	x	40	x
12	175	6	63		40	
13	153	4	59		40	
14	131	2	50		40	
15	110	1	34		40	
16	110		29			
17	88		29			
18	88		29			
19	88		29			
20	88		29			
21	65		18			
22	65		18			
23	65		18			
24	65		18			
25	65		18			
26	44					
27	44					
28	44					
29	44					
30	44					
TOTALS			\$2,234		\$1,458	

4. Race Numbers

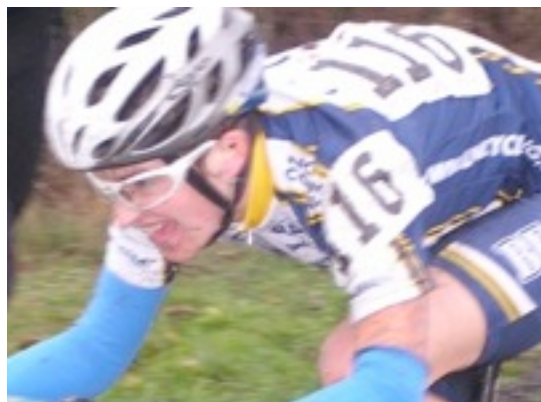
UCI



Categories will have fore-arm & hip numbers. All other categories will only have hip numbers.

The hip (large) number is to be placed on the left side of the body with the bottom of the number aligned with the middle of the side panel of the jersey that the rider is wearing. The fore-arm number is to be placed on the front-facing portion of the upper arm. See photos below.





Misplaced or misapplied numbers will risk the rider to not being scored for the race. Please make sure to properly place the numbers according to the above guidelines. Please feel free to consult race staff or the head official if you have questions on number placement.

5. Course Description

The courses are approximately 3k in length with a goal of 7 minute lap times. Some areas of the course will change from Saturday to Sunday.

The Saturday course is a new course. Going in a clockwise direction when viewed from the air, the Start is on pavement slightly uphill for approximately 300 meters, turns slightly into grass and goes in a northerly direction. One of the primary features of this course is a flyover of wood construction with stairs as the entry, a 12' long flat section to allow riders to remount their bike and followed by a ramp.

The Sunday course is a variation of the classic Gloucester course. Going in a clockwise direction when viewed from the air, the Start is on pavement slightly uphill for approximately 300 meters, turns slightly into grass and goes in a northerly direction.

A new feature of the course is a beach run-up. After negotiating a few turns to reduce speed, riders will descend towards the beach on a cement ramp. After a run on the beach, riders will climb a set of stairs specially constructed to bring riders over some large rocks. After these stairs, riders will be able to complete the rest of the run on the

Both race courses feature the following:

- run up adjacent to the beer tent
- a set of planks set in an area that tests the riders ability to dismount/remount at speed.
- a slightly uphill paved section to the finish line.

5. Course Maps

Directions

From Boston: Rt 93 North to I 28 North, exit 14 (Rt 133) Take right off exit to go I 33 East. Follow signs to Gloucester Welcome Center/Stage Fort Park. You'll be on I 33 for about 2.8 miles. Turn right at Kent Circle and go through stop signs. The race is about 50 yards past the stop signs on the left.

From Points North: Take Rt 93 South to I 28 North - follow as above.

From Points West: Take Mass Pike East to I 28 North - follow as above.

Follow the signs to parking.

6. Start Area/Rider Call Ups

Riders must present themselves at the Start area 15 minutes before the start of their event for call-ups. The order of call-ups is as follows:

Category	Sat. – 1 Oct	GP Gloucester #1	Sun. – 2 Oct	GP Gloucester #2
	Primary Order	Secondary Order	Primary Order	Secondary Order
Non-UCI	Verge points	crossresults.com standings, registration order	Verge points	crossresults.com standings, registration order
UCI Men & Women	Current UCI points random draw		Current UCI points random draw	

7. Shimano Pit Area

Only authorized personnel are allowed access to the equipment pits. The Pit Official will have full authorization to deny access to any person who interferes or hinders operations in the pit. The Pit is not a spectator spot.

8. Bike Wash

Water is available from the Pedro's Bike Wash station. During UCI races, it is encouraged that only mechanics pitting for UCI competitors during their event use the water located near the pit. Others are encouraged to use the Bike Wash.

9. Lapped Riders

UCI 5.1.051 Lapped riders must complete the lap during which they were lapped and leave the event via an exit located before the finishing straight or in the "80%" zone as described in article 5.1.052, if that rule applies. They will be listed in the results in the order in which they are pulled out of the race plus number of laps which have not been completed.

USAC 5G.1 Lapped riders who are permitted to remain in the race will all finish on the same lap as the leader and will be placed according to the number of laps they are down and then their position at the finish.

10. First Aid

First Aid is available near the registration area in the Visitor Center. A doctor or trained medical assistant will be available from 8:00am-4:30pm. Also, a non-dedicated ambulance will be on site between calls.

11. Awards

The top 3 in every event must report immediately to the start/finish area for awards and interviews. Awards will take place immediately after the top riders finish and last only a few minutes.

12. Anti-Doping

All races are conducted under USA Cycling, UCI and USADA antidoping regulations. The numbers of riders who are required to present themselves for testing will be posted outside the Visitors Center (see map) before the end of each event. Riders are solely responsible to check this list and to present themselves as indicated. Doping Control will be located in the Gloucester Visitors Center.

Event Staff

Paul Boudreau
Executive Director
paul@gpgloucester.com

Michele Harrison
VP Operations/Registration
michele@gpgloucester.com

Dan Donovan
Host Housing
dand@gpgloucester.com

Marge Curry
Production Director
meg@gpgloucester.com

Chris McKernan
VP Operations
chris@gpgloucester.com

Sherri Curcuru
City Liaison
sherri@gpgloucester.com

Jason Knauff
Registration/Results Director
jason@gpgloucester.com

Patrick Cochran
Volunteer Coordinator
patrick@gpgloucester.com

David Beaulieu
Kids Race Director
david@ecvcycling.org

Officials

UCI Comm: Tom Nee

Chief Judge: Kristin Mills

Kelli Prodanas - Judge
Jeff Boutiette - Judge
Bill Dolan - pit
Chris Constantino - pit
Diane Fortini - Assistant
Referee

Sponsors

Great Brewers
Mazda
Essex County Velo
Mavic
Pedro's
Craft